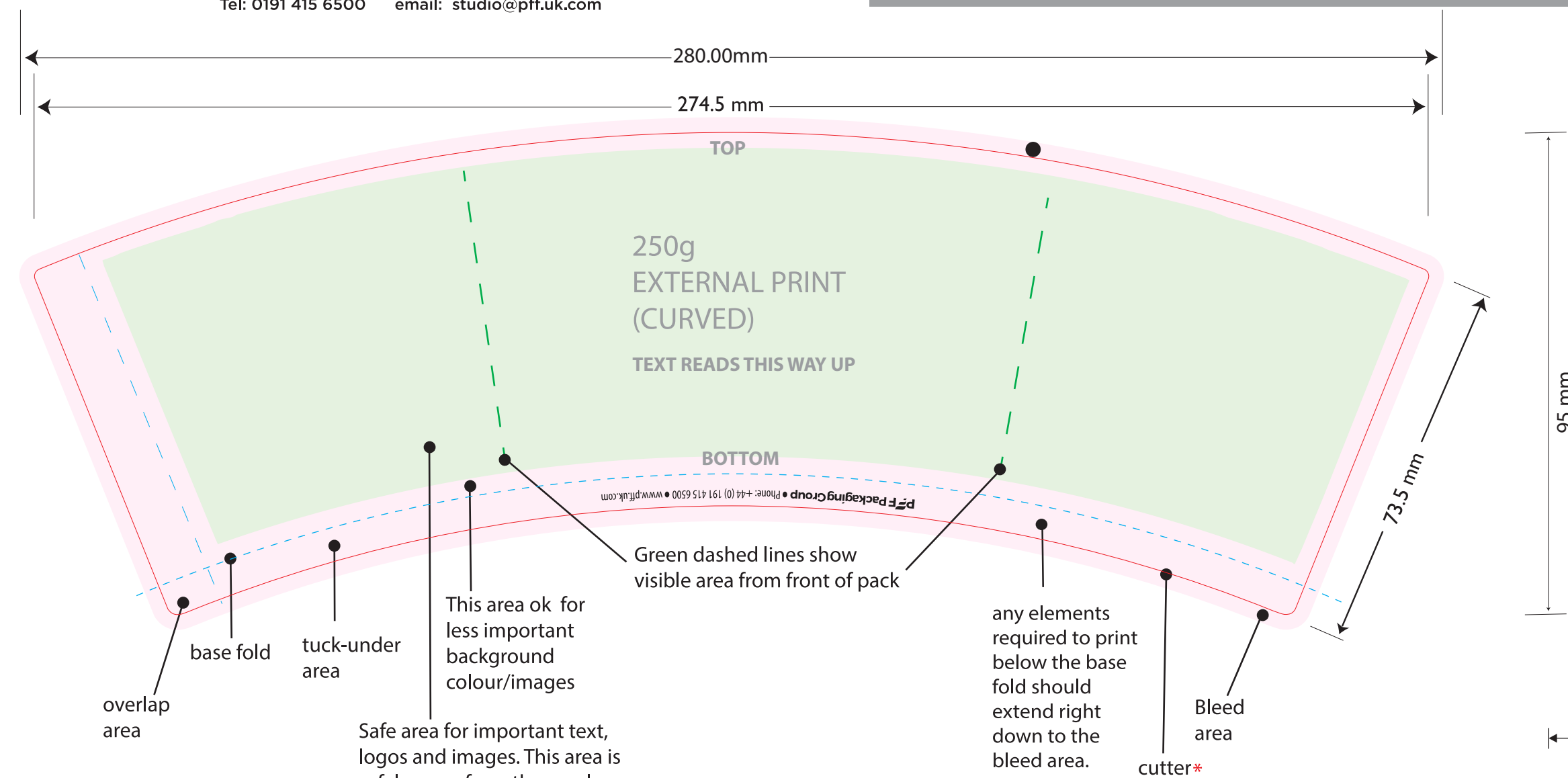


DESTO 250g ARTWORK ELEMENTS

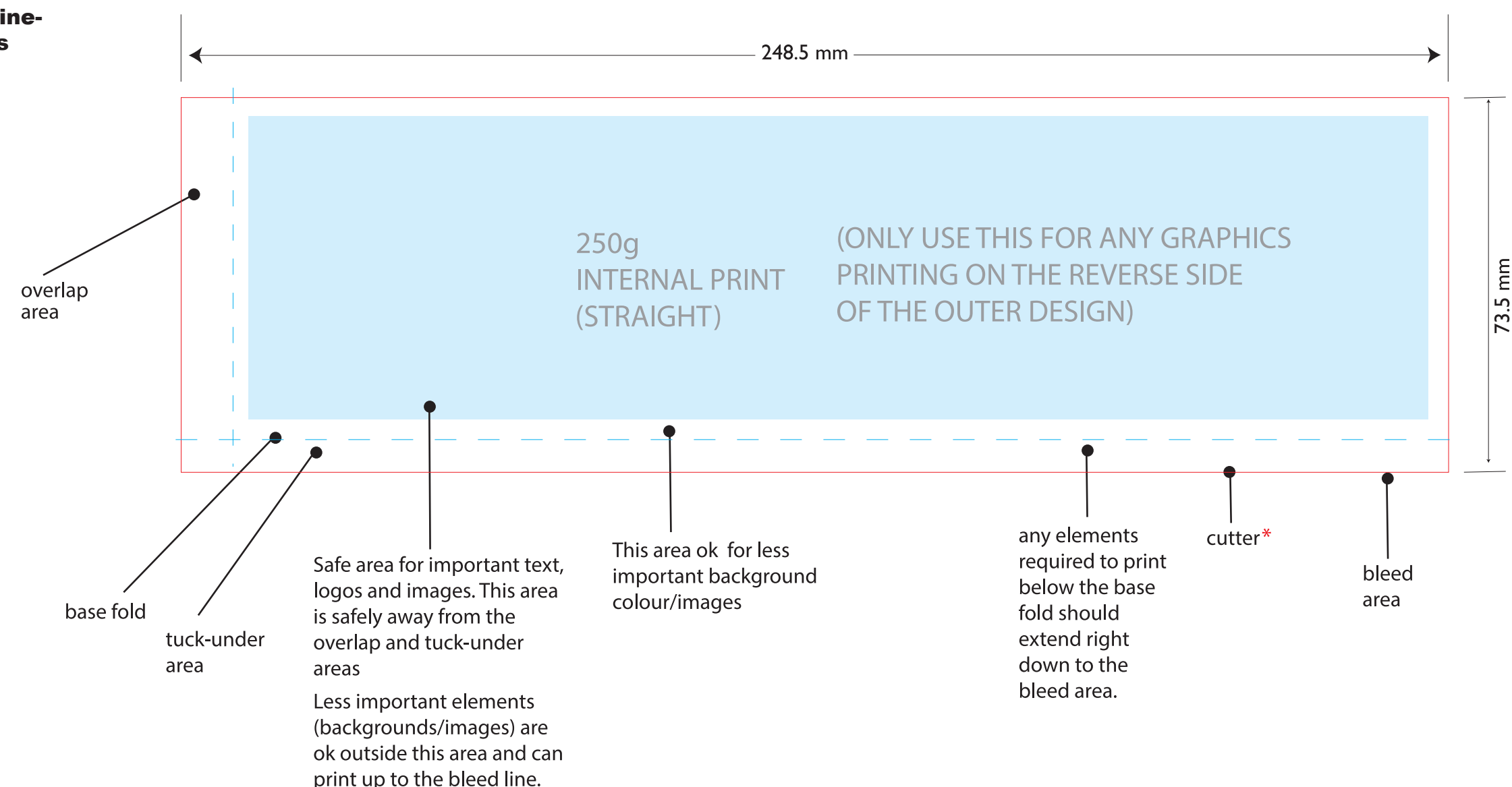
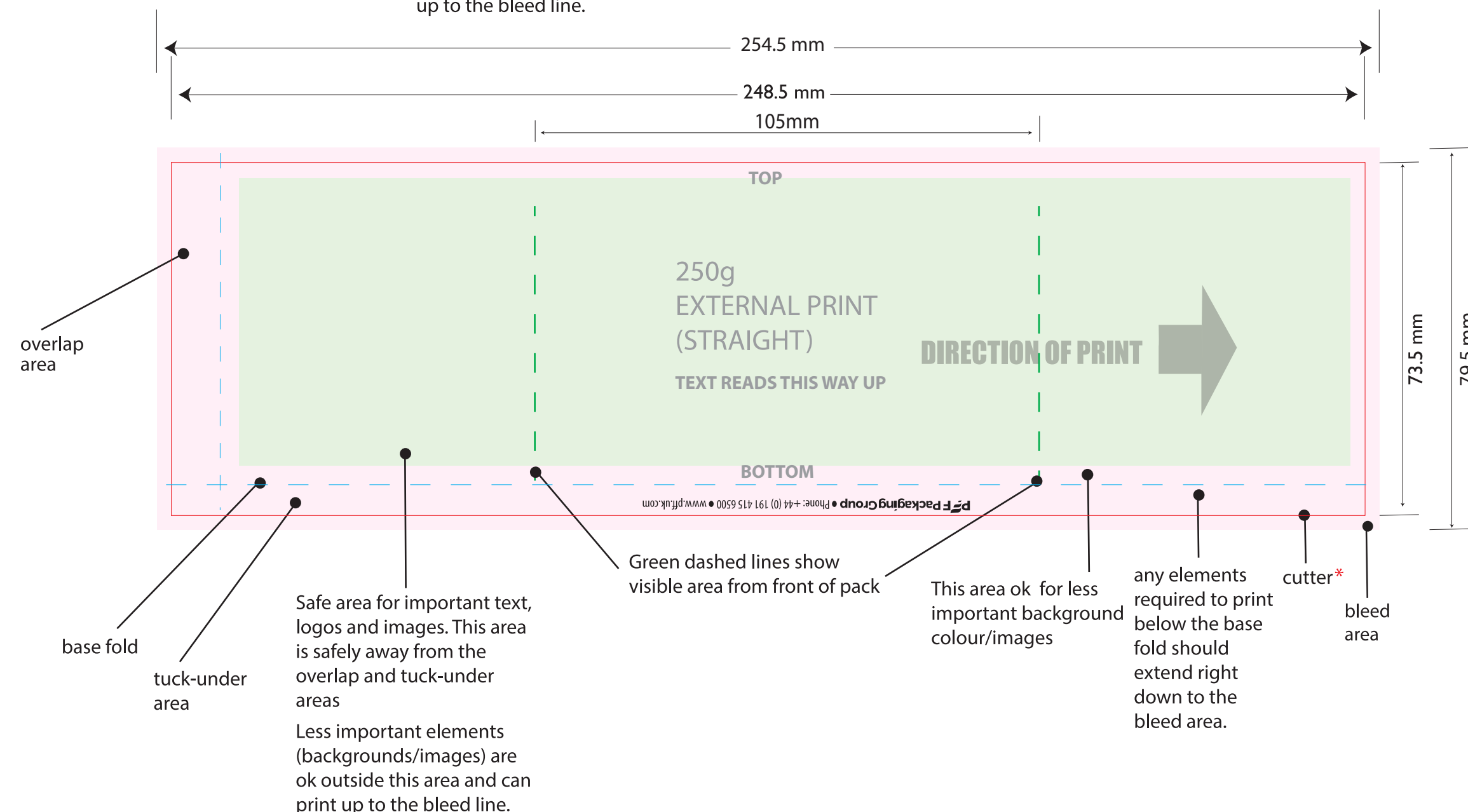
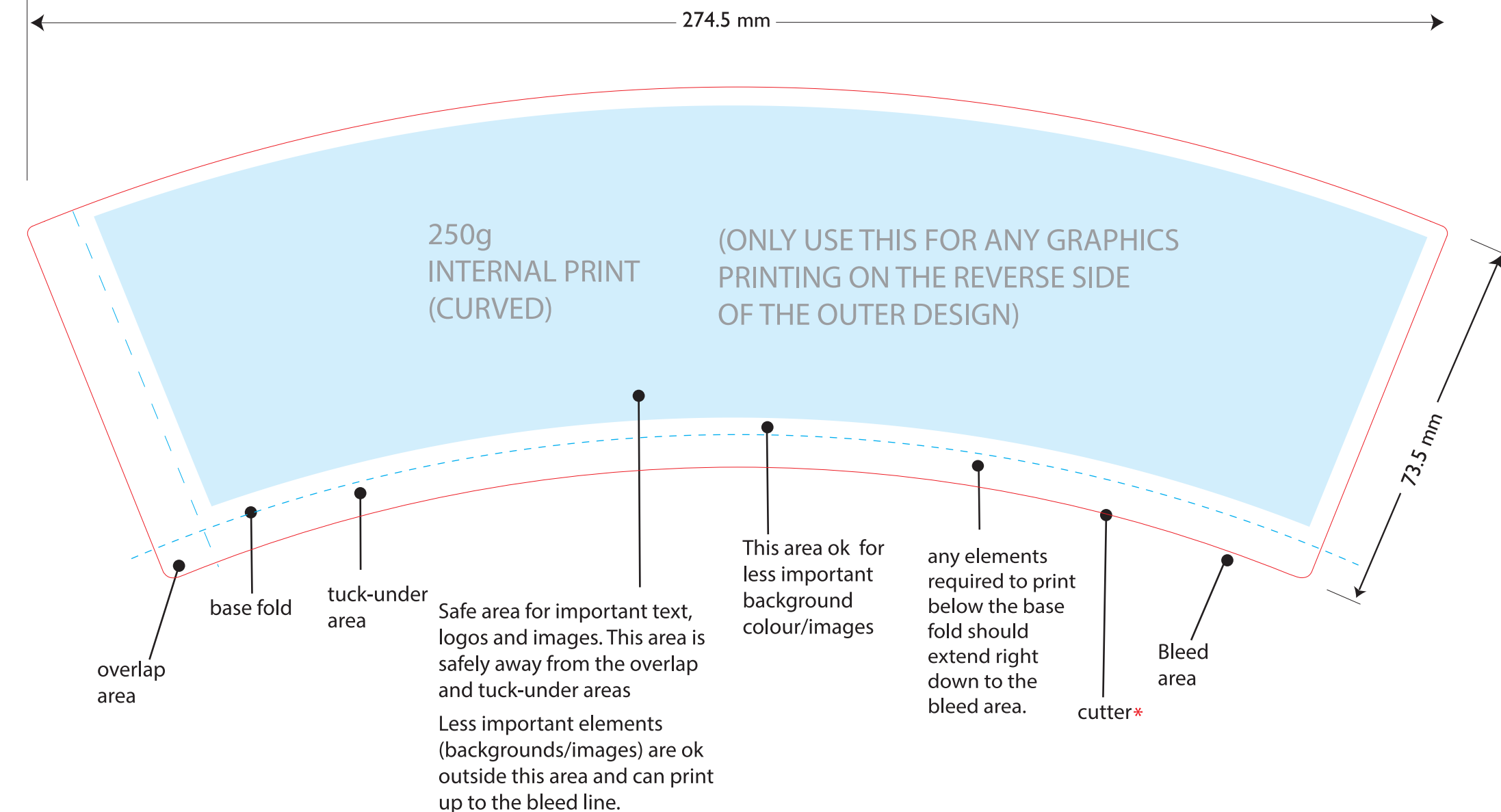


Print Area 60mm



250g BASE

Ideally, the base should be left blank however, if it is absolutely necessary, any design printing on the base should be basic 1 colour line-work as per this example.



*

PLEASE NOTE:

THE STRAIGHT KEYLINE IS FOR GUIDANCE ONLY.

FINAL ARTWORK SHOULD BE SUPPLIED TO THE CURVED KEYLINE

***THERE IS A POSITIONAL CUT TOLERANCE OF +/- 1.5mm**